

Normal and pathological status kinesigram

Normal

The normal kinesigram or ball of yarn should theoretically have the following characters:

Appearance plumb, compact, not very wide, not scattered

- Equidistant
- Symmetrical
- Located topographically and geographically well in the center of its support polygon.

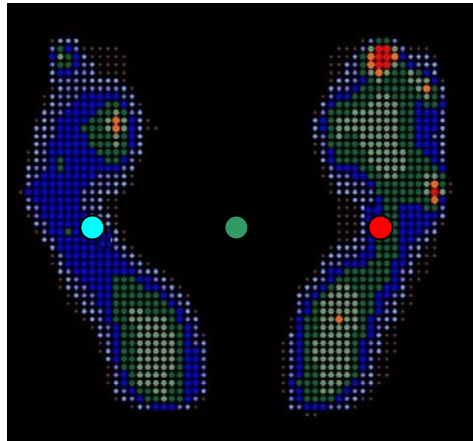


Fig. 1 Normal kinesigram in a standing bipodalic position

In calibrated bipodalic stabilometry it should ideally respect the following characteristics:

- geographic, topographical location with full centering with respect to the origin of the Y / X axes of the platform

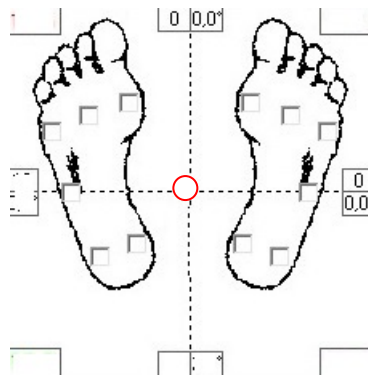


Fig.2 Normal status kinesigram in calibrated stabilometry

Ideally, the partial status kinesigrams of the left foot should return a symmetrical rectangle without variations in amplitude.



Fig. 3 Ideal normal rectangle of the two status kinesigrams left (blue), right (red)

In the stabilometric study in a sitting position, in the crurogramm we should ideally see:

- ball of yarn well within the crurogram
- ball well centered with respect to the X and Y axis v. Fig. 4

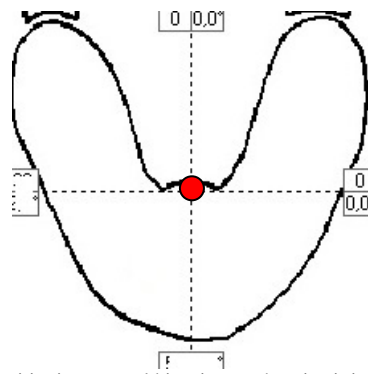


Fig. 4 Positioning normal kinesigram chart in sitting position

- stellar aspect of the kinesigram state during net perturbation tests with rear, front, right side, left side see fig. 5

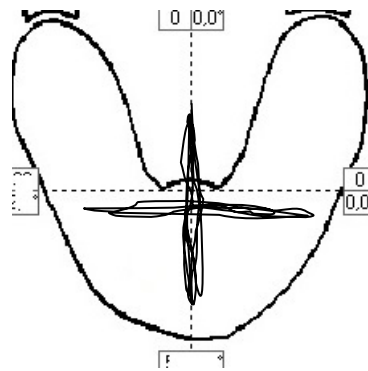


Fig. 5 Normal stellar kinesigram in sitting position

Pathological



Fig. 1 Wide and sparse OA moved to the left.



Fig. 2 OC Wide and sparse moved to the left

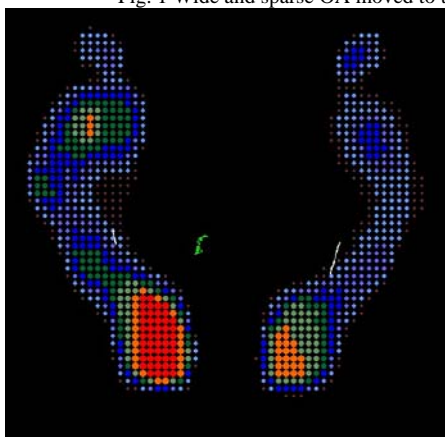


Fig. 3 OACR amplitude increase and left shift

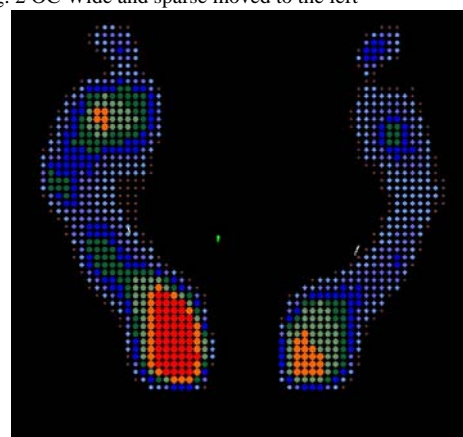


Fig. 4 OCCR almost point polygon

Outcomes left cerebellar ataxia

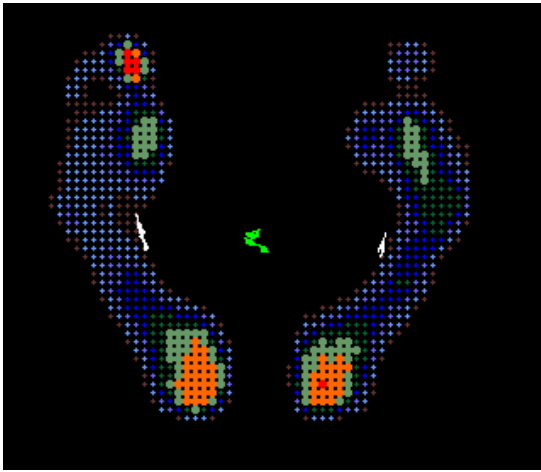


Fig.5 OA wide, scattered

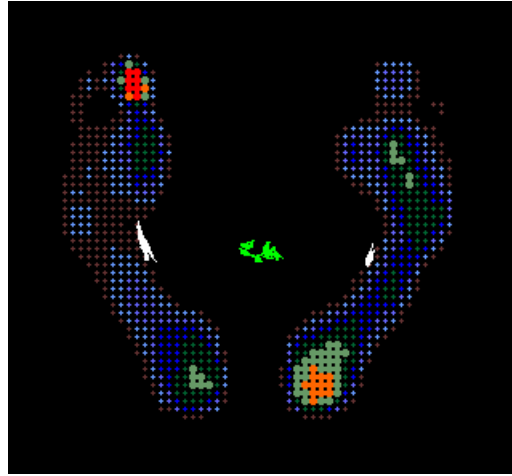


Fig.6 OC Increase in amplitude and dispersion

Multiple sclerosis

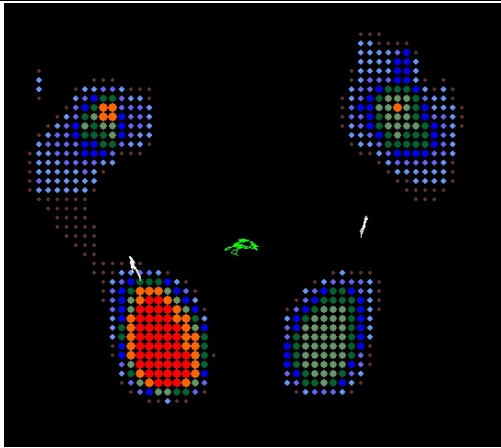


Fig.7 Wide scattered OA

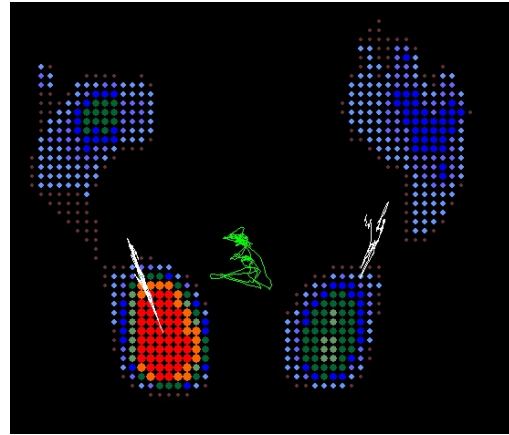


Fig.8 Increase in amplitude and dispersion to the left

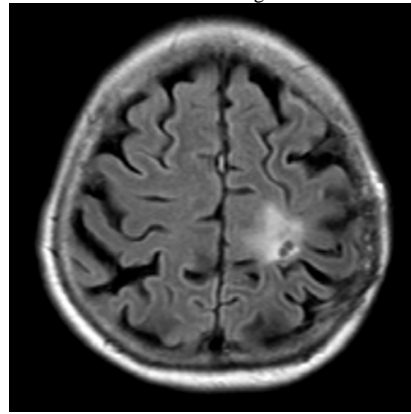


Fig. 9 Left rolandic oligodendroglioma

Results of left rolandic astrocytoma removal with static-dynamic ataxia

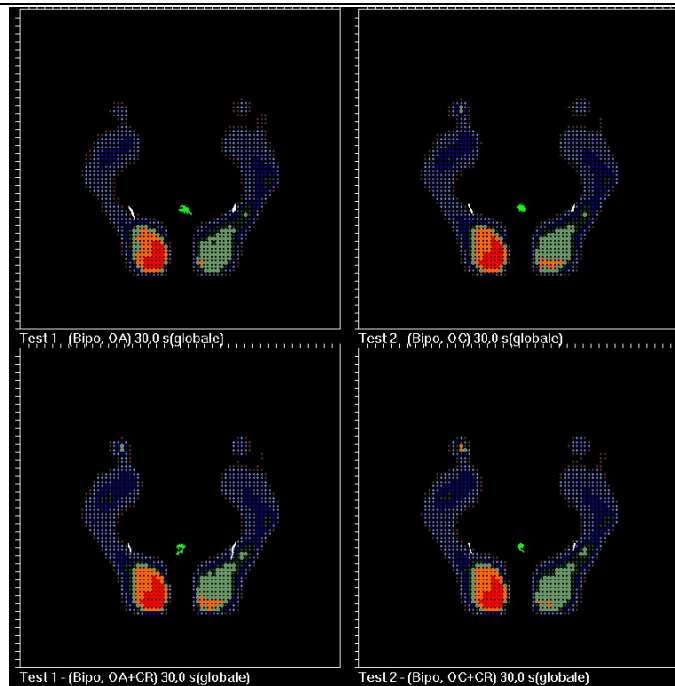


Fig. 10 Results of benign positional vertigo

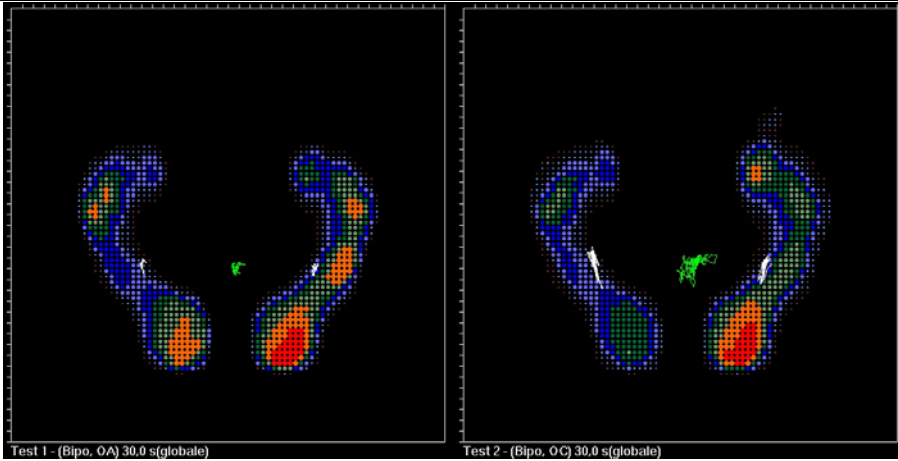


Fig.11 **Diabetic polyneuropathy**: enlargement with closed eyes due to alteration of proprioception